

# HARD-WORKING BULLS ...

*... ready for a job!*



*Annual Production Sale*

**Saturday,  
May 18, 2013**

**5 p.m. CDT  
Kist Livestock • Mandan, ND**

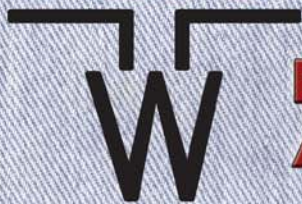
**Selling:**

**33 Top-End Virgin 2-Year-Old  
Red Angus Bulls**

*That Will Put Pounds on the Ground*



**FLYING W**



**RED  
ANGUS**

Fellow Cattlemen,

Welcome to the first annual Flying W Red Angus bull sale. Although the name is new, there is over 30 years of breeding Red Angus with Rock Creek Red Angus genetics represented. Flying W Red Angus genetics have topped the Kist March bred sale the last two years for both bred heifers and cows.

The bulls are developed slowly to maintain feet and structure. They are fed a high-roughage ration from weaning, grassed in the summer, and fed to sale weight in 90 days.

We look forward to meeting and developing lasting relationships with you. If you have any questions, feel free to call or come by.

Thanks,

Bodie Winters, Herdsman

Fellow Livestock Producers:

It is my pleasure to provide a little history behind this outstanding offering of two year old Red Angus bulls.

Four years ago, Linda and I decided to cut back on our herd which we have been developing since the early 80s. John Wakefield, who had been raising market-topping commercial Red Angus for several years, offered to buy 60 head of our very top cows, followed by purchasing the top of our bred replacement heifers the next year. We, in turn, agreed to help him get started in the registered business, and Flying W Red Angus was formed. We continue to work together, sharing herd sires, showing the cattle and flushing cows. Flying W and Rock Creek will have females for sale and a joint bull sale in 2014.

Flying W Red Angus currently calves over 200 registered cows and the bulls in this sale represent the top end of those calves. They are sound, big-boned, heavy-muscled bulls. These bulls are in condition to cover a large group of cows producing big, thick, efficient calves that really push the scale down.

It is a pleasure working with John and Dawn and we will be happy to answer any questions about the bulls, their sires or their dams. Remember, most of the bulls are out of mothers that go back eight to 10 generations on our ranch. They work for us and the bulls will work for you.

Charlie Lewis, Rock Creek Red Angus



# FLYING W RED ANGUS & ROCK CREEK RED ANGUS

*First Annual Bull Sale*

**Saturday, May 18, 2013 - 5 p.m. CDT**

Kist Livestock Auction, Mandan, ND

**SELLING: 33 Top-End Virgin 2-Year-Old Red Angus Bulls**

*That Will Put Pounds on the Ground*

Steak Supper Following the Sale

## **AUCTIONEER:**

Seth Weishaar..... (605) 210-1336

## **SALE DAY PHONES:**

Kist Livestock Auction..... (701) 663-9573

John Wakefield ..... (701) 789-0666

Bodie Winters ..... (406) 861-4040

Charlie Lewis..... (406) 855-9542

## **RINGMEN:**

Terry Robinson, Farm & Ranch Guide ..... (701) 471-5153

Kris Petersen, Cattle Business Weekly ..... (701) 339-0305

## **SALE CONSULTANT:**

Tony Heins..... (701) 400-4435

## **DELIVERY:**

Flying W Red Angus will provide delivery to central points for bulls delivered within 200 miles. We will work with customers to provide delivery for distances beyond 200 miles. Due to the lateness of the sale, we would recommend pick up at sale time in order to assure meeting the needs of your breeding schedule.

## **BREEDING GUARANTEE:**

All bulls will be semen tested and guaranteed breeders. We stand behind our bulls and will assist any purchaser in the event of problems during the first breeding season.

## **SUPPLEMENT SHEET:**

Scrotal measurements and current weights available sale day.

## **BULLS AVAILABLE FOR VIEWING:**

At Kist Livestock prior to the sale Friday, May 17 and Saturday, May 18. Until Thursday, May 16, bulls may be viewed at the Flying W Red Angus Bull Development Center, Binford, ND. Please contact Bodie Winters (406-861-4040) or John Wakefield (701-789-0666) for directions.

## **CATALOGS & INFORMATION:**

Flying W Red Angus..... (701) 789-0666

Rock Creek Red Angus ..... (406) 855-9542 or (406) 962-3330

**VIEW CATALOG ONLINE:** [cowcampcatalogs.com](http://cowcampcatalogs.com)

## **CATALOG PRODUCTION & DESIGN:**

Tracey Koester, Cow Camp Promotions, [cowcamppromotions.com](http://cowcamppromotions.com)

## RCRA BIG RIVER 850

#1234338

CED	BW	WW	YW	Milk	TM	ME	HPG	CEM	St	Marb	YG	CW	REA	Fat
6	0.2	51	81	23	48	4	8	2	6	0.13	-0.03	19	0.10	-0.02
35%	69%	63%	55%	35%	50%	54%	74%	72%	87%	91%	38%	48%	55%	13%

## SSS BOOMER 803B

#405937

CED	BW	WW	YW	Milk	TM	ME	HPG	CEM	St	Marb	YG	CW	REA	Fat
-4	2.6	52	76	22	48	5	2	3	14	-0.08	-0.10	19	0.13	-0.04
95%	94%	61%	64%	41%	52%	60%	99%	63%	13%	99%	17%	48%	49%	3%

## PIE ADVANTAGE 4139

#979305

CED	BW	WW	YW	Milk	TM	ME	HPG	CEM	St	Marb	YG	CW	REA	Fat
2	0.8	59	86	18	47	3	7	12	9	0.48	-0.05	22	0.35	0.00
64%	76%	43%	48%	62%	54%	49%	88%	5%	62%	34%	32%	41%	20%	41%

## RCRA PONDEROSA 849

#1234339

CED	BW	WW	YW	Milk	TM	ME	HPG	CEM	St	Marb	YG	CW	REA	Fat
-1	0.6	60	91	20	50	3	5	4	12	0.00	0.14	24	0.10	0.04
83%	74%	38%	38%	52%	40%	46%	94%	54%	31%	97%	88%	35%	55%	88%

## VGW GAME PLAN 508

#1029305

CED	BW	WW	YW	Milk	TM	ME	HPG	CEM	St	Marb	YG	CW	REA	Fat
-5	-0.8	67	107	16	49	6	13	6	10	0.75	0.11	32	-0.03	0.00
98%	55%	21%	17%	73%	43%	64%	12%	34%	45%	8%	83%	20%	77%	41%

## RCRA GOT R DID 852

#1234332

CED	BW	WW	YW	Milk	TM	ME	HPG	CEM	St	Marb	YG	CW	REA	Fat
2	1.1	76	108	20	58	-1	11	0	7	0.17	0.08	34	0.08	0.00
64%	81%	9%	16%	53%	12%	26%	38%	83%	78%	87%	75%	15%	58%	41%

## RED FINE LINE MULBERRY 26P

#1151261

CED	BW	WW	YW	Milk	TM	ME	HPG	CEM	St	Marb	YG	CW	REA	Fat
-2	0.4	75	128	20	58	-2	7	9	8	0.42	0.20	47	0.12	0.03
87%	71%	9%	3%	52%	12%	20%	83%	14%	69%	45%	95%	4%	50%	82%

## RED 6 MILE FULL THROTTLE171T #1232884

CED	BW	WW	YW	Milk	TM	ME	HPG	CEM	St	Marb	YG	CW	REA	Fat
-5	2.0	62	103	12	43	-8	4	-2	5	0.36	0.22	35	-0.13	0.03
98%	90%	33%	21%	88%	73%	8%	96%	91%	94%	56%	97%	15%	87%	82%

## PIE CODE RED 9058

#1348362

CED	BW	WW	YW	Milk	TM	ME	HPG	CEM	St	Marb	YG	CW	REA	Fat
-3	-1.1	75	116	18	55	8	10	5	12	0.44	0.02	37	0.05	-0.03
92%	49%	10%	9%	64%	19%	78%	46%	43%	31%	42%	55%	11%	64%	6%

## PIE GRIDMASTER 589

#1062835

CED	BW	WW	YW	Milk	TM	ME	HPG	CEM	St	Marb	YG	CW	REA	Fat
0	-0.6	71	97	3	39	-2	7	1	14	0.54	-0.10	25	0.56	0.00
78%	58%	14%	30%	98%	85%	20%	83%	78%	11%	25%	17%	32%	6%	41%



# Reference Sires

## RCRA STRATEGY 845

#1234334

CED	BW	WW	YW	Milk	TM	ME	HPG	CEM	St	Marb	YG	CW	REA	Fat
-2	0.1	71	110	15	51	6	10	4	10	0.60	0.08	35	0.07	0.00
92%	69%	10%	9%	84%	36%	69%	39%	52%	46%	14%	80%	9%	59%	44%

## MBV CHEROKEE 326-506

#1038456

CED	BW	WW	YW	Milk	TM	ME	HPG	CEM	St	Marb	YG	CW	REA	Fat
5	-1.1	60	79	22	52	2	11	3	10	0.46	0.04	15	0.03	0.01
41%	49%	40%	59%	41%	32%	44%	38%	63%	46%	38%	63%	59%	68%	56%

## GMRA MR MIMI 6178

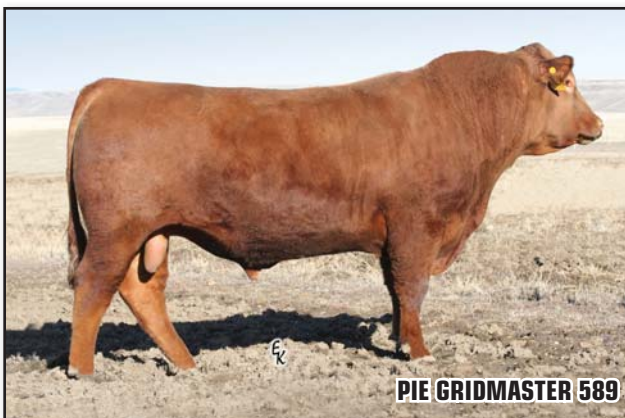
#1111603

CED	BW	WW	YW	Milk	TM	ME	HPG	CEM	St	Marb	YG	CW	REA	Fat
10	-3.6	58	88	20	49	7	7	0	10	0.23	-0.14	17	0.38	-0.02
15%	18%	47%	44%	49%	45%	70%	85%	83%	46%	79%	10%	54%	17%	13%

## VOS CUB 336-936

#1349836

CED	BW	WW	YW	Milk	TM	ME	HPG	CEM	St	Marb	YG	CW	REA	Fat
0	0.2	48	80	18	42	3	8	2	5	0.19	-0.04	18	0.12	-0.02
80%	71%	75%	59%	66%	81%	45%	88%	74%	96%	89%	32%	50%	48%	11%



## 1 FLYING W BOOMER 147Y

BD	Cat.	%	Reg. #	BW	205-Day Wt.	Dam's MPPA/Age
4/18/11	1A	100%	1476175	90	548	105.1 7

FCC RAMBO 502  
**SSS BOOMER 803B**  
 SSS MS HIGH LASS 352X

PIE DEEP DOWN 2005  
**RCRA ERICA 4P**  
 RCRA ERICA 8M

CV FOUR TIMES  
 COPPER LASS 2392  
 R SSS HIGH LINE 402M  
 SSS FRST-CLSS LASS 46T

PIE DEEP CANYON 908  
 BLCA DUKE MISS 3517  
 RED FLAME 9497  
 DEKAP TANTILIZING ERICA 30K7

CED	BW	WW	YW	Milk	TM	ME	HPG	CEM	St	Marb	YG	CW	REA	Fat
-1	1.6	55	84	22	50	3	5	2	7	0.14	-0.05	22	0.13	-0.03
89%	89%	53%	47%	30%	38%	52%	98%	77%	85%	94%	25%	35%	50%	7%

## 2 FLYING W BOOMER 152Y

BD	Cat.	%	Reg. #	BW	205-Day Wt.	Dam's MPPA/Age
4/19/11	1A	100%	1476179	93	639	105.1 7

FCC RAMBO 502  
**SSS BOOMER 803B**  
 SSS MS HIGH LASS 352X

PIE DEEP DOWN 2005  
**RCRA ERICA 4P**  
 RCRA ERICA 8M

CV FOUR TIMES  
 COPPER LASS 2392  
 R SSS HIGH LINE 402M  
 SSS FRST-CLSS LASS 46T

PIE DEEP CANYON 908  
 BLCA DUKE MISS 3517  
 RED FLAME 9497  
 DEKAP TANTILIZING ERICA 30K7

CED	BW	WW	YW	Milk	TM	ME	HPG	CEM	St	Marb	YG	CW	REA	Fat
-1	1.6	55	84	22	50	3	5	2	7	0.14	-0.05	22	0.13	-0.03
89%	89%	53%	47%	30%	38%	52%	98%	77%	85%	94%	25%	35%	50%	7%



## 3 FLYING W BOOMER 154Y

BD	Cat.	%	Reg. #	BW	205-Day Wt.	Dam's MPPA/Age
4/20/11	1A	100%	1476178	94	685	105.1 7

FCC RAMBO 502  
**SSS BOOMER 803B**  
 SSS MS HIGH LASS 352X

PIE DEEP DOWN 2005  
**RCRA ERICA 4P**  
 RCRA ERICA 8M

CV FOUR TIMES  
 COPPER LASS 2392  
 R SSS HIGH LINE 402M  
 SSS FRST-CLSS LASS 46T

PIE DEEP CANYON 908  
 BLCA DUKE MISS 3517  
 RED FLAME 9497  
 DEKAP TANTILIZING ERICA 30K7

CED	BW	WW	YW	Milk	TM	ME	HPG	CEM	St	Marb	YG	CW	REA	Fat
-1	1.6	55	84	22	50	3	5	2	7	0.14	-0.05	22	0.13	-0.03
89%	89%	53%	47%	30%	38%	52%	98%	77%	85%	94%	25%	35%	50%	7%

## 4 FLYING W ADVANTAGE 180Y

BD	Cat.	%	Reg. #	BW	205-Day Wt.	Dam's MPPA/Age
4/27/11	1A	100%	1476078	72	707	98.5 7

PERKS ADVANCE 121R  
**PIE ADVANTAGE 4139**  
 PIE LO PLAYMATE 883

LCC MAJOR LEAGUE A502M  
**RCRA HIGHLINE SUE 22P**  
 RCRA HIGHLINE SUE

RBJR ADVANCE A709  
 PERKS MISS RAMBO 8105  
 GLACIER LOGAN 210  
 PIE JULY DALLES

BFCK CHEROKEE CNYN 4912  
 KRN REBA'S ROBIN  
 R SSS HIGH LINE 402M  
 BCHRCHNILE549M35L425

CED	BW	WW	YW	Milk	TM	ME	HPG	CEM	St	Marb	YG	CW	REA	Fat
5	-2.4	50	66	21	46	3	8	8	10	0.40	-0.14	5	0.29	-0.02
34%	22%	70%	82%	38%	59%	52%	84%	8%	59%	46%	7%	85%	22%	12%

## 5 FLYING W PONDEROSA 184Y

BD	Cat.	%	Reg. #	BW	205-Day Wt.	Dam's MPPA/Age
4/27/11	1A	100%	1476165	73	656	99.4 2

LCB HOSS A444N  
**RCRA PONDEROSA 849**  
 RCRA MS FLAMEBERRY 14M

RED SIX MILE TERMINATOR 182T  
**FLYING W LOMA 133W**  
 RCRA LOMA 18S

BLUE RIDGE PONDEROSA  
 RSLND REBELLA 120-502  
 RED FLAME 9497  
 RCRA MS PHOENIX FIRE

RED SIX MILE PARK AVE. 392P  
 RED BOUNTY B MISS SIERA BAR  
 PIE ADVANTAGE 4139  
 RCRA LOMA FLAME 3M

CED	BW	WW	YW	Milk	TM	ME	HPG	CEM	St	Marb	YG	CW	REA	Fat
3	-1.0	56	84	19	47	0	7	6	10	0.14	0.06	18	0.10	0.02
54%	45%	49%	47%	58%	54%	28%	94%	23%	51%	94%	73%	48%	57%	79%



## 6 FLYING W PONDEROSA 187Y

BD	Cat.	%	Reg. #	BW	205-Day Wt.	Dam's MPPA/Age
4/28/11	1A	100%	1476170	83	655	100.9 2

LCB HOSS A444N  
**RCRA PONDEROSA 849**  
 RCRA MS FLAMEBERRY 14M

RED SIX MILE TERMINATOR 182T  
**FLYING W CASHMERE 144W**  
 RCRA CASHMERE 26S

BLUE RIDGE PONDEROSA  
 RSLND REBELLA 120-502  
 RED FLAME 9497  
 RCRA MS PHOENIX FIRE

RED SIX MILE PARK AVE. 392P  
 RED BOUNTY B MISS SIERA BAR  
 PIE ADVANTAGE 4139  
 RCRA CASHMERE

CED	BW	WW	YW	Milk	TM	ME	HPG	CEM	St	Marb	YG	CW	REA	Fat
0	1.2	56	85	19	47	-1	7	4	10	0.12	0.09	22	0.07	0.02
84%	85%	48%	46%	59%	55%	25%	92%	51%	58%	95%	83%	37%	64%	79%

## 7 FLYING W GAME PLAN 189Y

BD	Cat.	%	Reg. #	BW	205-Day Wt.	Dam's MPPA/Age
4/28/11	1A	100%	1476139	82	676	101.8 3

LCC IMF B054M  
**VGW GAME PLAN 508**  
 VGW PT- DORY 0361

4L RAM CANYON 62S  
**RCRA CASCADE 819**  
 RCRA CASCADE 1P

GLACIER MARIAS 548  
 LCC LICORICE K1280  
 5L PRIME TIME 2559  
 VGW 819 DORY 0020

C-T CANYON 429  
 4L MS RAMBO R733  
 PIE DEEP DOWN 2005  
 RCRA CASCADE 4M

CED	BW	WW	YW	Milk	TM	ME	HPG	CEM	St	Marb	YG	CW	REA	Fat
-2	-0.1	59	93	18	47	4	10	4	8	0.42	0.07	25	0.00	0.00
94%	63%	35%	29%	69%	52%	62%	43%	51%	77%	41%	77%	28%	79%	45%



## 8 FLYING W PONDEROSA 191Y

BD	Cat.	%	Reg. #	BW	205-Day Wt.	Dam's MPPA/Age
4/30/11	1A	100%	1476155	80	652	98 2

LCB HOSS A444N  
**RCRA PONDEROSA 849**  
 RCRA MS FLAMEBERRY 14M

VGW GAME PLAN 508  
**FLYING W CASCADE 116W**  
 RCRA CASCADE 1P

BLUE RIDGE PONDEROSA  
 RSLND REBELLA 120-502  
 RED FLAME 9497  
 RCRA MS PHOENIX FIRE

LCC IMF B054M  
 VGW PT- DORY 0361  
 PIE DEEP DOWN 2005  
 RCRA CASCADE 4M

CED	BW	WW	YW	Milk	TM	ME	HPG	CEM	St	Marb	YG	CW	REA	Fat
-1	0.2	60	92	18	48	4	8	4	11	0.17	0.09	25	0.06	0.02
89%	69%	33%	30%	68%	49%	59%	87%	51%	39%	92%	83%	28%	66%	79%





## 9 FLYING W PONDEROSA 198Y

BD	Cat.	%	Reg. #	BW	205-Day Wt.	Dam's MPPA/Age
5/2/11	1A	100%	1476160	84	671	98.9 2
LCB HOSS A444N				BLUE RIDGE PONDEROSA		
<b>RCRA PONDEROSA 849</b>				RSLND REBELLA 120-502		
RCRA MS FLAMEBERRY 14M				RED FLAME 9497		
RED FINE LINE MULBERRY 26P				RCRA MS PHOENIX FIRE		
<b>BCRR FOXY MARIA MULBERRY 914</b>				RED COMPASS MULBERRY 449M		
BCRR FOXY MARIA 919J				RED DUS FAYETTE 8G		
				GLACIER MARIAS 548		
				PANHANDLE LUCY 6067		

CED	BW	WW	YW	Milk	TM	ME	HPG	CEM	St	Marb	YG	CW	REA	Fat
-2	0.7	62	95	21	52	2	7	5	12	0.17	0.11	27	0.10	0.03
94%	78%	25%	25%	40%	22%	46%	91%	36%	31%	92%	88%	22%	57%	88%



## 10 FLYING W GOT R DID 206Y

BD	Cat.	%	Reg. #	BW	205-Day Wt.	Dam's MPPA/Age
5/3/11	1A	100%	1476137	87	697	101.1 3
PIE GET R DONE 684				PIE CHICAWA 366		
<b>RCRA GOT R DID 852</b>				PIE RED RUBY 4094		
RCRA FIREBERRY 1N				RED MEM FED'S BO 61K		
4L RAM CANYON 62S				RCRA FIREBERRY 3K		
<b>RCRA FOXY 812</b>				C-T CANYON 429		
RCRA MAJOR FOXY 18P				4L MS RAMBO R733		
				LCC MAJOR LEAGUE A502M		
				RCRA MS DAISY DRIVE		

CED	BW	WW	YW	Milk	TM	ME	HPG	CEM	St	Marb	YG	CW	REA	Fat
-1	1.3	68	99	19	53	2	9	-1	8	0.30	0.02	30	0.21	0.00
89%	86%	10%	18%	57%	17%	40%	60%	95%	84%	72%	55%	16%	34%	45%

## 11 FLYING W MULBERRY 207Y

BD	Cat.	%	Reg. #	BW	205-Day Wt.	Dam's MPPA/Age
5/4/11	1A	100%	1476055	67	578	96.2 9
RED COMPASS MULBERRY 449M				RED HR RAMBO ET 91K		
<b>RED FINE LINE MULBERRY 26P</b>				RED BRYLOR MISS ROC 20H		
RED DUS FAYETTE 8G				SILVEIRAS REDFORD		
RED FLAME 9497				RED MC DOUGALL FAYETTE 59A		
<b>RCRA CASCADE 4M</b>				RED BLAZE V415		
RCRA CASCADE				RED PATTY 4043		
				RED ROCKET R233		
				RCRA KING'S LASS		

CED	BW	WW	YW	Milk	TM	ME	HPG	CEM	St	Marb	YG	CW	REA	Fat
4	-1.1	49	82	22	46	2	6	6	7	0.23	0.06	17	-0.01	0.01
43%	43%	74%	53%	34%	60%	40%	96%	23%	85%	85%	73%	52%	80%	61%

## 12 FLYING W FULL THROTTLE 209Y

BD	Cat.	%	Reg. #	BW	205-Day Wt.	Dam's MPPA/Age
5/4/11	1A	100%	1476102	83	665	97.4 5

RD TER-RON FULLY LOADED 540R  
**RED 6 MILE FULL THROTTLE171T**  
 RED SIX MILE WITZEL 360J

RED HEARTLAND KNIGHT CHARM 1  
 RED TER-RON GOLDIE 240L  
 RED PASQUIA ARAB 28E  
 RED C Y WITZEL 392Z

PIE ADVANTAGE 4139  
**RCRA SCARLET 31S**  
 RCRA SCARLET 15M

PERKS ADVANCE 121R  
 PIE LO PLAYMATE 883  
 RED FLAME 9497  
 RCRA SCARLET

CED	BW	WW	YW	Milk	TM	ME	HPG	CEM	St	Marb	YG	CW	REA	Fat
1	0.1	53	81	14	41	-3	5	3	7	0.32	0.07	18	-0.01	0.01
75%	67%	61%	54%	89%	86%	16%	98%	65%	86%	67%	77%	48%	80%	61%



**Lot 12**

## 13 FLYING W CODE RED 219Y

BD	Cat.	%	Reg. #	BW	205-Day Wt.	Dam's MPPA/Age
5/9/11	1A	100%	1476125	72	684	100 4

VGW GAME PLAN 508  
**PIE CODE RED 9058**  
 PIE STORMY 541

LCC IMF B054M  
 VGW PT- DORY 0361  
 LCB HOSS A444N  
 PIE STORMY BEEFMAKER 327

PIE ADVANTAGE 4139  
**RCRA SUE 24T**  
 RCRA HIGHLINE SUE 22P

PERKS ADVANCE 121R  
 PIE LO PLAYMATE 883  
 LCC MAJOR LEAGUE A502M  
 RCRA HIGHLINE SUE

CED	BW	WW	YW	Milk	TM	ME	HPG	CEM	St	Marb	YG	CW	REA	Fat
2	-2.3	58	84	20	49	5	9	7	12	0.42	-0.08	16	0.17	-0.02
65%	24%	40%	47%	52%	42%	70%	66%	14%	32%	41%	16%	56%	42%	12%



**Lot 13**

## 14 FLYING W GOT R DID 223Y

BD	Cat.	%	Reg. #	BW	205-Day Wt.	Dam's MPPA/Age	
5/10/11	1A	100%	1476150	82	690	100	3

PIE GET R DONE 684  
**RCRA GOT R DID 852**  
 RCRA FIREBERRY 1N

4L RAM CANYON 62S  
**RCRA EMERALD 836**  
 RCRA MAJOR EMERALD 12P

PIE CHICAWA 366  
 PIE RED RUBY 4094  
 RED MEM FED'S BO 61K  
 RCRA FIREBERRY 3K

C-T CANYON 429  
 4L MS RAMBO R733  
 LCC MAJOR LEAGUE A502M  
 RED MAC MISS EMERALD 7E

CED	BW	WW	YW	Milk	TM	ME	HPG	CEM	St	Marb	YG	CW	REA	Fat
0	0.6	66	96	21	55	0	10	0	8	0.29	0.05	27	0.16	0.01
84%	76%	14%	22%	38%	12%	30%	52%	91%	77%	74%	69%	21%	44%	61%

## 15 FLYING W CODE RED 224Y

BD	Cat.	%	Reg. #	BW	205-Day Wt.	Dam's MPPA/Age	
5/11/11	1A	100%	1476076	84	724	100.5	7

VGW GAME PLAN 508  
**PIE CODE RED 9058**  
 PIE STORMY 541

PIE DEEP DOWN 2005  
**RCRA KINGS LASS 21P**  
 RCRA KING'S LASS

LCC IMF B054M  
 VGW PT- DORY 0361  
 LCB HOSS A444N  
 PIE STORMY BEEFMAKER 327

PIE DEEP CANYON 908  
 BLCA DUKE MISS 3517  
 ROCK CREEK KING  
 RCRA DYNA WHEEL 972

CED	BW	WW	YW	Milk	TM	ME	HPG	CEM	St	Marb	YG	CW	REA	Fat
-1	-0.2	63	98	20	52	6	10	4	9	0.25	0.01	28	0.09	-0.02
89%	61%	23%	19%	48%	25%	76%	49%	51%	64%	82%	50%	21%	59%	12%



## 16 FLYING W GRIDMASTER 228Y

BD	Cat.	%	Reg. #	BW	205-Day Wt.	Dam's MPPA/Age	
5/11/11	1A	100%	1476112	85	713	101.6	4

LCB HOSS A444N  
**PIE GRIDMASTER 589**  
 PIE KRUGGER KANYON 353

PIE ADVANTAGE 4139  
**RCRA DEEP SCARLET 5T**  
 RCRA DEEP SCARLET 28P

BLUE RIDGE PONDEROSA  
 RSLND REBELLA 120-502  
 BFCK CHEROKEE CNYN 4912  
 PIE LO KRUGGER 1159

PERKS ADVANCE 121R  
 PIE LO PLAYMATE 883  
 PIE DEEP DOWN 2005  
 RCRA SCARLET

CED	BW	WW	YW	Milk	TM	ME	HPG	CEM	St	Marb	YG	CW	REA	Fat
1	0.1	64	90	11	43	0	8	4	12	0.40	-0.08	23	0.42	0.00
75%	67%	21%	35%	97%	77%	28%	85%	51%	28%	46%	16%	34%	9%	45%

## 17 FLYING W GAME PLAN 229Y

BD	Cat.	%	Reg. #	BW	205-Day Wt.	Dam's MPPA/Age
5/13/11	1A	100%	1476110	65	625	95.8 4
LCC IMF B054M <b>VGW GAME PLAN 508</b> VGW PT- DORY 0361				GLACIER MARIAS 548 LCC LICORICE K1280 5L PRIME TIME 2559 VGW 819 DORY 0020		
PIE ADVANTAGE 4139 <b>RCRA BUNNY 3T</b> RCRA MAJOR BUNNY 19P				PERKS ADVANCE 121R PIE LO PLAYMATE 883 LCC MAJOR LEAGUE A502M RCRA BUNNY 8149		

CED	BW	WW	YW	Milk	TM	ME	HPG	CEM	St	Marb	YG	CW	REA	Fat
2	-3.3	51	77	15	41	4	11	7	10	0.57	-0.03	11	0.08	-0.01
65%	13%	67%	63%	84%	86%	61%	29%	14%	49%	14%	33%	72%	61%	23%



## 18 FLYING W PONSEROSA 232Y

BD	Cat.	%	Reg. #	BW	205-Day Wt.	Dam's MPPA/Age
5/14/11	1A	100%	1476159	63	678	102.6 2
LCB HOSS A444N <b>RCRA PONDEROSA 849</b> RCRA MS FLAMEBERRY 14M				BLUE RIDGE PONDEROSA RSLND REBELLA 120-502 RED FLAME 9497 RCRA MS PHOENIX FIRE		
SRR TOP RIDGE 217 <b>FLYING W CASEY BELLE 124W</b> RCRA FARGO BELLE 23N				LCHMN GRANDCANYON 1244G LARSON JOAN 898-213 LDCC FARGO 111 RCRA CASEY BELLE		

CED	BW	WW	YW	Milk	TM	ME	HPG	CEM	St	Marb	YG	CW	REA	Fat
3	-1.2	51	81	26	52	6	8	5	8	0.12	0.01	16	0.12	0.01
54%	41%	66%	55%	8%	25%	74%	84%	36%	83%	95%	50%	55%	52%	61%

# RED ANGUS AVERAGE EPDS

### Average EPDs for Proven and Opportunity Sires

CED	BW	WW	YW	Milk	TM	ME	HPG	CEM	St	Marb	YG	CW	REA	Fat
5	-1.3	55	83	20	47	3	10	5	10	0.44	0.02	17	0.09	0.01

### Average EPDs for Non-Parents Under Two Years of Age

CED	BW	WW	YW	Milk	TM	ME	HPG	CEM	St	Marb	YG	CW	REA	Fat
4	-1.0	56	83	20	48	2	10	4	11	0.42	0.00	19	0.11	0.00



# 2-Year-Old Bulls

## 19 FLYING W STRATEGY 233Y

BD	Cat.	%	Reg. #	BW	205-Day Wt.	Dam's MPPA/Age
5/15/11	1A	100%	1476120	84	763	108.4 4

VGW GAME PLAN 508  
**RCRA STRATEGY 845**  
 RCRA GYPSY 8N

BFCK CHEROKEE CNYN 4912  
**TLS LARKABA T742**  
 TLS LARKABA K046

LCC IMF B054M  
 VGW PT- DORY 0361  
 RCRA COMET 10L  
 RCRA GYPSY PHOENIX  
 BUF CRK CHF 824-1658  
 MRM 1431 8611 9109  
 GLACIER NYACK 688  
 BL SPRUCE LARKABA 65G

CED	BW	WW	YW	Milk	TM	ME	HPG	CEM	St	Marb	YG	CW	REA	Fat
0	0.0	70	103	19	54	5	10	0	11	0.42	0.03	31	0.21	0.00
84%	65%	8%	12%	62%	16%	67%	56%	91%	46%	41%	60%	14%	34%	45%



## 20 FLYING W GAME PLAN 235Y

BD	Cat.	%	Reg. #	BW	205-Day Wt.	Dam's MPPA/Age
5/16/11	1A	100%	1476105	82	695	99.1 5

LCC IMF B054M  
**VGW GAME PLAN 508**  
 VGW PT- DORY 0361

PIE ADVANTAGE 4139  
**RCRA CASCADE 4S**  
 RCRA CASCADE 1P

GLACIER MARIAS 548  
 LCC LICORICE K1280  
 5L PRIME TIME 2559  
 VGW 819 DORY 0020  
 PERKS ADVANCE 121R  
 PIE LO PLAYMATE 883  
 PIE DEEP DOWN 2005  
 RCRA CASCADE 4M

CED	BW	WW	YW	Milk	TM	ME	HPG	CEM	St	Marb	YG	CW	REA	Fat
0	-1.0	57	90	18	47	5	10	6	9	0.48	0.03	22	0.08	0.00
84%	45%	42%	34%	68%	57%	64%	43%	23%	67%	28%	60%	37%	61%	45%

**WATCH FOR DETAILS  
 ON OUR ANNUAL  
 COW SALE IN  
 DECEMBER**

## 21 FLYING W GOT R DID 237Y

BD	Cat.	%	Reg. #	BW	205-Day Wt.	Dam's MPPA/Age	
5/10/11	1A	100%	1476118	76	621	93.3	4
PIE GET R DONE 684 <b>RCRA GOT R DID 852</b> RCRA FIREBERRY 1N  PIE ADVANTAGE 4139 <b>RCRA GYPSY 12T</b> RCRA GYPSY PHOENIX				PIE CHICAWA 366 PIE RED RUBY 4094 RED MEM FED'S BO 61K RCRA FIREBERRY 3K  PERKS ADVANCE 121R PIE LO PLAYMATE 883 GMRA PHOENIX 3X 588 RCRA MS DAISY DRIVE			

CED	BW	WW	YW	Milk	TM	ME	HPG	CEM	St	Marb	YG	CW	REA	Fat
4	-0.8	59	85	17	47	2	10	5	8	0.32	0.04	19	0.11	0.01
43%	49%	38%	46%	74%	58%	39%	55%	36%	75%	67%	64%	47%	55%	61%



Lot 21

## 22 FLYING W GOT R DID 238Y

BD	Cat.	%	Reg. #	BW	205-Day Wt.	Dam's MPPA/Age	
5/20/11	1A	100%	1476108	80	812	99.4	5
PIE GET R DONE 684 <b>RCRA GOT R DID 852</b> RCRA FIREBERRY 1N  PIE ADVANTAGE 4139 <b>RCRA LOMA 29S</b> RCRA HIGHLINE LOMA				PIE CHICAWA 366 PIE RED RUBY 4094 RED MEM FED'S BO 61K RCRA FIREBERRY 3K  PERKS ADVANCE 121R PIE LO PLAYMATE 883 R SSS HIGH LINE 402M BCHRCHNILE549M35L425			

CED	BW	WW	YW	Milk	TM	ME	HPG	CEM	St	Marb	YG	CW	REA	Fat
4	0.5	69	96	21	55	0	9	6	8	0.21	-0.01	27	0.14	-0.02
43%	74%	10%	22%	41%	10%	31%	61%	23%	82%	87%	41%	22%	48%	12%



Lot 22

## 23 FLYING W GOT R DID 242Y

BD	Cat.	%	Reg. #	BW	205-Day Wt.	Dam's MPPA/Age	
5/22/11	1A	100%	1476106	80	717	98.7	5
PIE GET R DONE 684 <b>RCRA GOT R DID 852</b> RCRA FIREBERRY 1N  PIE ADVANTAGE 4139 <b>RCRA LOMA 18S</b> RCRA LOMA FLAME 3M				PIE CHICAWA 366 PIE RED RUBY 4094 RED MEM FED'S BO 61K RCRA FIREBERRY 3K  PERKS ADVANCE 121R PIE LO PLAYMATE 883 RED FLAME 9497 RCRA HIGHLINE LOMA			

CED	BW	WW	YW	Milk	TM	ME	HPG	CEM	St	Marb	YG	CW	REA	Fat
4	0.0	68	98	21	55	2	9	4	8	0.23	0.03	28	0.12	0.00
43%	65%	11%	19%	45%	13%	45%	76%	51%	80%	85%	60%	21%	52%	45%

## 24 FLYING W GOT R DID 244Y

BD	Cat.	%	Reg. #	BW	205-Day Wt.	Dam's MPPA/Age	
5/22/11	1A	100%	1476130	86	751	102.3	3
PIE GET R DONE 684 <b>RCRA GOT R DID 852</b> RCRA FIREBERRY 1N  4L RAM CANYON 62S <b>RCRA BUNNY 881</b> RCRA BUNNY 3S				PIE CHICAWA 366 PIE RED RUBY 4094 RED MEM FED'S BO 61K RCRA FIREBERRY 3K  C-T CANYON 429 4L MS RAMBO R733 PIE ADVANTAGE 4139 RCRA BUNNY 2L			

CED	BW	WW	YW	Milk	TM	ME	HPG	CEM	St	Marb	YG	CW	REA	Fat
2	0.4	68	99	22	56	2	9	3	7	0.18	0.11	29	0.00	0.01
65%	72%	11%	17%	33%	8%	40%	73%	65%	92%	91%	88%	17%	79%	61%

## 25 FLYING W CLASSIC 104Y

BD	Cat.	%	Reg. #	BW	205-Day Wt.	Dam's MPPA/Age	
2/16/11	1A	100%	1476079	98	688	98.4	7
BUF CRK CHEROKEE N009 <b>MBV CHEROKEE 326-506</b> VOS CLASSIC 038-326  BJR MONU 4X-303 <b>VOS MONU 4X 724-440</b> VOS LANA 724				BFCK CHEROKEE CNYN 4912 BUF CRK LASS L147 LORENZEN 1416 MBV BH 412-038  RED SSS MONU4X 237C RCRA SAMANTHA BASIN HOBO 215D AQUILA 503			

CED	BW	WW	YW	Milk	TM	ME	HPG	CEM	St	Marb	YG	CW	REA	Fat
2	0.1	61	93	17	48	8	10	3	12	0.24	0.07	25	-0.05	-0.01
65%	67%	31%	29%	73%	51%	87%	40%	65%	29%	83%	77%	28%	87%	23%



Lot 25

## 26 FLYING W BIG RIVER 110Y

BD	Cat.	%	Reg. #	BW	205-Day Wt.	Dam's MPPA/Age								
2/22/11	1A	100%	1476128	86	635	95.1 4								
PIE DEEP CREEK 120 <b>RCRA BIG RIVER 850</b> RCRA CASCADE 4M  BUF CRK CHEROKEE N009 <b>VOS CHERRY 715-788</b> VOS LANA 715				PIE DEEP CANYON 908 PIE FAYETTE JR 961 RED FLAME 9497 RCRA CASCADE  BFCK CHEROKEE CNYN 4912 BUF CRK LASS L147 BASIN HOBO 215D AQUILA 502										
CED	BW	WW	YW	Milk	TM	ME	HPG	CEM	St	Marb	YG	CW	REA	Fat
6	-0.1	54	80	15	42	3	10	2	9	0.20	0.00	17	0.10	0.00
26%	63%	54%	56%	88%	82%	52%	55%	77%	73%	89%	46%	52%	57%	45%

## 27 FLYING W MISTER 114Y

BD	Cat.	%	Reg. #	BW	205-Day Wt.	Dam's MPPA/Age								
2/27/11	1A	100%	1476077	96	697	98.7 7								
BIEBER MAKE MIMI 7249 <b>GMRA MR MIMI 6178</b> GMRA ANGIE ROSE 120  HOLDEN HI HO 7151 <b>ASV 7151 710-434</b> TREKS KATIE 710				BJR MAKE MY DAY 981 BIEBER SIRENA 6708 LCHMN RED SPREAD 1271F GMRA ANGIE ROSE 115  HOLDEN HI HO 574 DOUBLE FORK 061C ROCK CREEK TREK SONNY DELIGHT										
CED	BW	WW	YW	Milk	TM	ME	HPG	CEM	St	Marb	YG	CW	REA	Fat
2	1.9	64	96	14	45	4	7	0	9	0.19	-0.04	29	0.25	-0.02
65%	92%	21%	23%	91%	64%	56%	89%	91%	63%	90%	29%	17%	27%	12%

## 28 FLYING W CUB 117Y

BD	Cat.	%	Reg. #	BW	205-Day Wt.	Dam's MPPA/Age								
3/3/11	1A	100%	1476148	88	645	96.9 3								
CCR CUB 107-518 <b>VOS CUB 336-936</b> VOS CHEROK 336  VOS MONU 4X 503-415 <b>VOS PRETTY GIRL 417-876</b> VOS MONU 4X 928-417				MLK CRK CUB 722 CCR EASY MAID 920-107 HOLDEN HI HO 7151 BRYLOR BJR CHEROK 63J  BJR MONU 4X-303 AQUILA 503 BJR MONU 4X-303 VOS BH 536-928										
CED	BW	WW	YW	Milk	TM	ME	HPG	CEM	St	Marb	YG	CW	REA	Fat
1	1.0	64	101	12	44	8	8	2	10	0.14	0.03	31	-0.02	-0.03
75%	82%	20%	15%	96%	75%	89%	80%	77%	50%	94%	60%	13%	82%	7%



Brooke McCleary with her NILE Merit Heifer, Flying W Morning Glory 109Y, 2012 NILE Red Angus Junior Show Reserve Grand Champion Heifer



## 29 FLYING W MISTER 120Y

BD	Cat.	%	Reg. #	BW	205-Day Wt.	Dam's MPPA/Age	
3/10/11	1A	100%	1476089	70	699	97.8	6

BIEBER MAKE MIMI 7249  
**GMRA MR MIMI 6178**  
 GMRA ANGIE ROSE 120

VOS MONU  
**VOS MONU 107-540**  
 VOS MISS DAY 928-107

BJR MAKE MY DAY 981  
 BIEBER SIRENA 6708  
 LCHMN RED SPREAD 1271F  
 GMRA ANGIE ROSE 115

BJR MONU 4X-303  
 AQUILA 503  
 BJR MAKE MY DAY 981  
 VOS BH 536-928

CED	BW	WW	YW	Milk	TM	ME	HPG	CEM	St	Marb	YG	CW	REA	Fat
9	-4.9	48	75	20	44	8	8	2	12	0.32	-0.10	7	0.14	-0.02
10%	4%	75%	67%	49%	71%	86%	83%	77%	33%	67%	12%	81%	48%	12%



## 30 FLYING W MISTER 123Y

BD	Cat.	%	Reg. #	BW	205-Day Wt.	Dam's MPPA/Age	
3/14/11	1A	100%	1476072	84	637	97.3	7

BIEBER MAKE MIMI 7249  
**GMRA MR MIMI 6178**  
 GMRA ANGIE ROSE 120

BJR SHOCKER 073  
**VOS SHOCKER 552-409**  
 AUILA 552

BJR MAKE MY DAY 981  
 BIEBER SIRENA 6708  
 LCHMN RED SPREAD 1271F  
 GMRA ANGIE ROSE 115

LARSON RED LIGHTNING  
 BJR TILLY 677-777  
 BJR EASY 930  
 AQUILA 303

CED	BW	WW	YW	Milk	TM	ME	HPG	CEM	St	Marb	YG	CW	REA	Fat
5	-1.8	43	69	24	45	5	9	1	9	0.24	-0.12	9	0.22	-0.02
34%	31%	87%	78%	19%	64%	71%	74%	85%	63%	83%	9%	77%	32%	12%



Flying W Xtra 111X  
 2012 NILE Reserve Grand Champion Red Angus Bull  
 Paternal brother to Lot 16 and a maternal brother to RCRA Got R Did 852

## 31 FLYING W MISTER 125Y

BD	Cat.	%	Reg. #	BW	205-Day Wt.	Dam's MPPA/Age
3/14/11	1A	100%	1476074	77	688	101.4 7

BIEBER MAKE MIMI 7249  
**GMRA MR MIMI 6178**  
 GMRA ANGIE ROSE 120

BJR MONU 4X-303  
**VOS MONU 4X 555-416**  
 AQUILA 555

BJR MAKE MY DAY 981  
 BIEBER SIRENA 6708  
 LCHMN RED SPREAD 1271F  
 GMRA ANGIE ROSE 115

RED SSS MONU4X 237C  
 RCRA SAMANTHA  
 BJR EASY 930  
 AQUILA 359

CED	BW	WW	YW	Milk	TM	ME	HPG	CEM	St	Marb	YG	CW	REA	Fat
7	-3.5	53	86	17	44	8	8	0	12	0.17	-0.07	16	0.15	-0.02
20%	12%	59%	43%	74%	74%	89%	83%	91%	31%	92%	19%	56%	46%	12%



Lot 31

## 32 FLYING W MISTER 127Y

BD	Cat.	%	Reg. #	BW	205-Day Wt.	Dam's MPPA/Age
3/22/11	1A	100%	1476075	97	666	95.7 7

BIEBER MAKE MIMI 7249  
**GMRA MR MIMI 6178**  
 GMRA ANGIE ROSE 120

VOS HIHO 904-110  
**VOS HI HO 043-421**  
 VOS-JR 555-043

BJR MAKE MY DAY 981  
 BIEBER SIRENA 6708  
 LCHMN RED SPREAD 1271F  
 GMRA ANGIE ROSE 115

HOLDEN HI HO 7151  
 VOS BCV 724-904  
 BJR JR 107  
 AQUILA 555

CED	BW	WW	YW	Milk	TM	ME	HPG	CEM	St	Marb	YG	CW	REA	Fat
3	0.5	63	98	14	46	7	8	1	10	0.26	-0.03	29	0.21	-0.02
54%	74%	23%	19%	89%	62%	81%	83%	85%	52%	80%	33%	18%	34%	12%



Lot 32



# 2-Year-Old Bulls

## 33 FLYING W CUB 132Y

BD	Cat.	%	Reg. #	BW	205-Day Wt.	Dam's MPPA/Age	
4/27/11	1A	100%	1476144	84	616	97.7	3

CCR CUB 107-518  
**VOS CUB 336-936**  
 VOS CHEROK 336

GMRA MR MIMI 6178  
**VOS MISS LADY 678-844**  
 VOS CHEROKEE 928-678

MLK CRK CUB 722  
 CCR EASY MAID 920-107  
 HOLDEN HI HO 7151  
 BRYLOR BJR CHEROK 63J

BIEBER MAKE MIMI 7249  
 GMRA ANGIE ROSE 120  
 BUF CRK CHEROKEE N009  
 VOS BH 536-928

CED	BW	WW	YW	Milk	TM	ME	HPG	CEM	St	Marb	YG	CW	REA	Fat
2	-0.3	51	79	16	42	4	8	1	9	0.28	-0.05	17	0.19	-0.01
65%	59%	65%	58%	81%	83%	59%	81%	85%	69%	76%	25%	54%	38%	23%



**Lot 33**



**RCRA Advantage 735**

*Outcross Genetics*

*Watch for his progeny at the December Female Sale and the 2014 Bull Sale*



**RED Fine Line Mulberry 26P**

**HARD-WORKING BULLS ...**

*... ready for a job!*



*Annual Production Sale*

**Saturday, May 18, 2013**

**5 p.m. CDT • Kist Livestock • Mandan, ND**

**Selling:**

**33 Top-End Virgin 2-Year-Old Red Angus Bulls**

***That Will Put Pounds on the Ground***

**FLYING W RED ANGUS**

John Wakefield

PO Box 486

Cooperstown, ND 58425

(701) 789-0666

skyways@mlgc.com



**FIRST CLASS  
US POSTAGE  
PAID**

**BISMARCK, ND  
PERMIT #256**